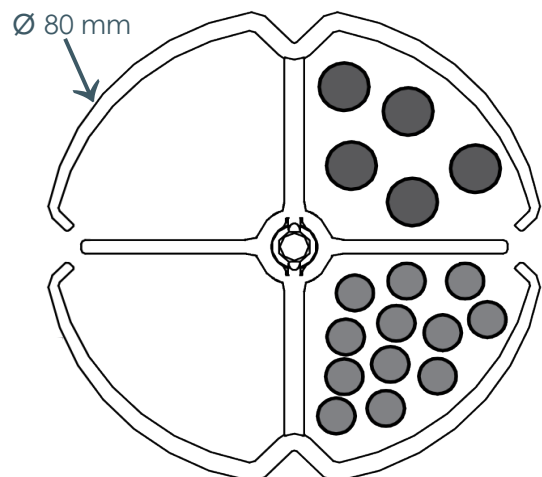


The OE Elsafe Superflex is a flexible vertical umbilical that offers protection for all your power and data cable requirements.

Superflex is available in three standard colours of white, clear or grey, and eleven other vibrant colours that are available by special order. This full range of colour options has been designed to suite any décor.

Superflex makes cable segregation easy, with room for cables to be enclosed in flexible conduit, while offering freedom and flexibility for all situations and configurations.

The unique design of the Superflex allows for an umbilical strain of up to 150kg and the unique interlocking segments provide a smooth and flexible solution that prevents twisting and jamming.



Cross Section - Four compartment  
900 mm per compartment

# superflex TECHNICAL

## STANDARD UMBILICAL CONFIGURATIONS



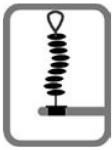
### loop to pin (C17)

Ideally suited for ceiling hung umbilicals either down to desk, screen or floor. The loop attaches to a hook/eye-bolt allowing the wire to be pulled tight and/or length adjustable.

### Applications using loop to pin configurations



Gripper base (C15) - provides a fixed lower connection point to prevent movement of the umbilical and thereby ensure protection of the cables. Generally used in ceiling-floor or ceiling-screen applications.



Collar base - a neat through desk solution with integral gripper allows cables to drop straight into the underdesk cable management, see illustration below far right.

### Product Variations

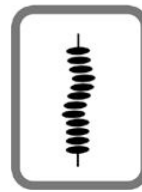
199900 - Superflex Maxi - 720mm - C17 - Black  
 199940 - Superflex Maxi - 720mm - C17 - Grey  
 199941 - Superflex Maxi - 720mm - C17 - White  
 199942 - Superflex Maxi - 720mm - C17 - Clear

125345 - Superflex Maxi - 1800mm - C17 - Black  
 125346 - Superflex Maxi - 1800mm - C17 - Grey  
 125347 - Superflex Maxi - 1800mm - C17 - White  
 125348 - Superflex Maxi - 1800mm - C17 - Clear

125349 - Superflex Maxi - 2200mm - C17 - Black  
 125351 - Superflex Maxi - 2200mm - C17 - Grey  
 125352 - Superflex Maxi - 2200mm - C17 - White  
 125353 - Superflex Maxi - 2200mm - C17 - Clear

125354 - Superflex Maxi - 2800mm - C17 - Black  
 125356 - Superflex Maxi - 2800mm - C17 - Grey  
 125357 - Superflex Maxi - 2800mm - C17 - White  
 125358 - Superflex Maxi - 2800mm - C17 - Clear

\*Please call OE Elsafe for all other configurations

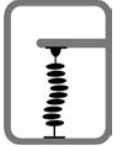


### Pin to Pin (C21)

Predominantly for use between desk and floor - they are not length adjustable. Stocked in 750mm lengths, however special lengths can be made to suit eg: sit to stand and height adjustable desks.

### Applications using pin to pin configurations

Weighted base (C14) - simple solution to 'reduce' movement at the umbilical base. NB: Weighted bases provide limited stress protection for the cables and in this respect are unsuitable for ceiling hung applications.

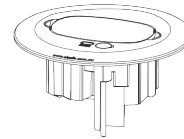


Grommet base (C13) - provides total protection of cables into the floor. Ideal for raised floor applications, but also for installation directly into floor box lids - considerably increasing the cable exit capacity of a floorbox.



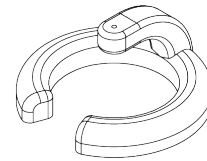
### Terminations

**Floor Grommet (Grey)** Through surface fixing.

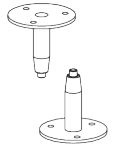


Floor Grommet Code 121780

**Weighted Base (Black)** Steel disc/ Cast horseshoe



**Gripper (CG2)** Screw down/up fixing

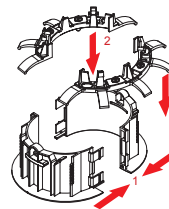


Gripper (CG2) Code 328141

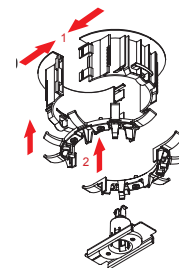
### UMBILICAL ACCESSORIES

Collar (white) - a smart through surface trim for ceiling, desk or 19" rack cabinet applications

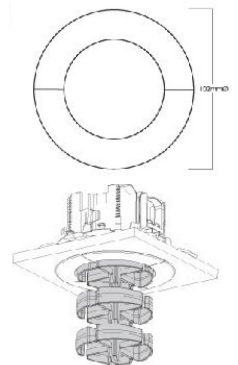
Ceiling Collar Code 306511



Desk Collar Code 121792



Superflex MAXI collar



Collar installation procedure (installed into a 102 mm hole, from 2-40 mm thick)